

Junior Learning Hub



An Information Booklet
for Parents and Whānau

Kia ora, Welcome to our Junior Learning Hub!



Our Mission

To create a safe and supportive learning community that nurtures children to blossom and grow into lifelong learners, who dream big and have a strong belief in their ability to achieve anything they put their mind to. Our aim is to support the creation of empathetic, culturally aware, global citizens who are able to confidently connect and make an impact on our ever changing world.

About Us

Manaia School supports the future success of our community by providing children with a universal place where they can learn how to respect one another both inside and outside of school. The importance of this is backed by evidence and general common sense as it helps to build a positive culture.

The unique way in which Manaia School approaches learning has been developed through consultation with children, parents and our community. Our philosophy is scientifically proven to be the most effective and engaging approach towards learning and brain development for Year 1-8 students.

Our forward thinking approach, along with our whānau like context provides a rich and friendly environment for children to nurture their curiosity.

The team at Manaia School work in collaboration to develop hearty children who have a belief in their ability to achieve anything they put their mind to. Our children are encouraged to have respect for themselves, others and the environment. We also support them to see the value and need for equality and equity in the world.

We genuinely care and invest in the success of all our children and always look forward to new members joining our school family.



Ka Whangaia - Ka Tupu - Ka Puawai
Helping children to grow in an ever changing world

Meet our Junior Learning Hub Team



Rachael Boulton

Junior Learning Hub (JLH) Teacher

Kia ora,

My name is Rachael Boulton and I'm excited to be teaching in the Junior Learning Hub at Manaia School. I spent six years as the Head Teacher at Hawera Kindergarten prior to this role. Relationship-based learning formed the foundation for each child's learning journey with us. This is something I strongly value as it formed the basis of my teaching philosophy and I am looking forward to continuing this approach toward learning at Manaia School.

My studies throughout the years have allowed me to acquire a Bachelor of Arts-Sociology degree and Postgraduate Diplomas of Teaching in both Primary and Early Childhood Education. These qualifications have enabled me opportunities to work in both spaces during my teaching career.

As a Kaiako I believe it is important for tamariki to develop a 'can do' attitude, and a willingness to take risks and step outside their comfort zone. Providing an environment that feels homely and where children feel safe is key. Having materials and resources available that allow children to explore in ways that are meaningful to them. Supporting and strengthening their interests and natural urges is also an important part of early learning. I look forward to sharing these moments alongside our tamariki this year.

I am a Mum to two school aged children (aged 11 and 7) and a wife to Kris. We currently live in Hawera. In my spare time I enjoy spending time with whānau and friends.



Teela Crawford

Learning Assistant/
High Health Needs Support

Teela has worked as a Learning Assistant on and off at Manaia School for the last 16 years. During this time she has supported children (including her brother) who have presented with various intellectual and physical challenges. We are so fortunate to have someone with her skillset on our team.

Teela is also a busy mother of 3. Her two younger children currently attend Manaia School.

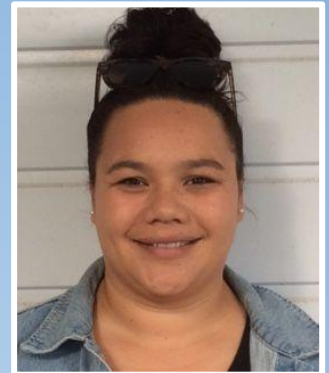


Lizzie Van Rooyen

Reading Recovery/ Junior Release Teacher

Lizzie is achieving amazing results in the area of Reading Recovery. The priority she places on building relationships and having good communication is having a real impact on the learning that is provided.

Outside of Reading Recovery Lizzie also offers further support and mentoring in our Junior Learning Hub (JLH) and covers Principal release in our middle school.



Mara Pakau

Relief Teacher

**Ko Taranaki te maunga
Ko Aotea te waka
Ko Ngaruahine te iwi
Ko William Pakau toku matua
No Okaiawa ia
Ko Sherry Kerehoma toku whaea
No Ohawe ia
Ko Dizjay Tucker toku tama
Ko Tamara toku ingoa
Ko Pakau toku ingoa whanau
No Hawera ahau**

Kia ora koutou

I'm Mara and I have been a part of the Manaia Community for almost 10 years. I was previously the senior kaiako over the fence at Manaia Community Preschool and have thoroughly enjoyed developing relationships with tamariki, whanau and the wider community.

It has been an absolute pleasure to watch our tamariki develop and grow as individuals and it feels just like yesterday the Year 8 students were with me at Preschool, oh how time flies!

I live in Hawera and have a 12 year old son. I'm excited to be a part of the Manaia School whānau, supporting our young tamariki into kura, making a smooth, positive and fun filled transition into school.

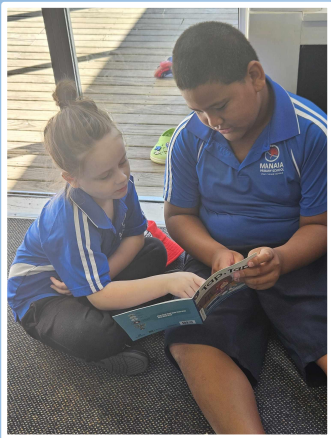


Learning in the Junior Learning Hub

All of our junior staff work hard to ensure that the learning needs set out in the New Zealand Curriculum are addressed in a developmentally appropriate way.

Learning is based on the individual needs of each child. Some children start school ready for a more structured approach towards learning, others need more time to focus on the foundational skills that allow children to develop their socio-emotional awareness while also finding success in both literacy and numeracy. Our space offers a balance of both.

Relationship based learning is at the heart of everything we do. It encourages children to build trust, confidently take risks and supports the creation of a 'can do' attitude towards learning. These are crucial skills that the brain naturally focuses on at this stage.



Structured Literacy

The main focus for literacy at level one is around forming a clear understanding about the purpose for reading and writing and creating a general enjoyment and 'can do' attitude about literacy. We use a structured literacy approach which allows us to draw on evidence based strategies to support the teaching and learning that takes place in our learning hub.

The following forms the key elements of our literacy sessions:

- Phonics (sound knowledge and identification)
- Reading to (vocabulary building)
- Shared reading
- Guided reading, and
- Writing skills



Mathematics

Level one of the curriculum is strongly focused on having mathematical experiences and learning the language of mathematics through rich experiences. Our children take part in one on one, small group or whole class activities to help develop their knowledge in this area.

An emphasis is placed on number knowledge, geometry and measurement. We also do 'Calendar maths' each day to help build knowledge around days of the week and months of the year.



Developmental Stages of Learning

(based on Leslee Allen's Model)

The developmental stages of learning provide a sequence of learning that aligns with recent brain science. Teachers use this as an assessment tool to ensure that the learning for each child sits within their capability. Ultimately, this also nurtures the 'can do' attitude that we are trying to develop at this early learning stage so children are confident about trying next learning steps and moving forward.

During transition visits, a strong emphasis is placed on stage 1: feeling happy and safe - developing an awareness of emotional self. This helps children to feel comfortable in their learning environment which is an integral part of their success at school.

When children initially start school we assess where they are sitting developmentally and tailor their learning to their individual needs.

STAGE 1	<i>Feeling happy and safe - developing an awareness of emotional self</i>
STAGE 2	<i>Developing gross motor skills</i>
STAGE 3	<i>Developing fine motor skills (hand strength)</i>
STAGE 4	<i>Developing working memory</i>
STAGE 5	<i>Developing phonological awareness</i>
STAGE 6	<i>Developing phonetic awareness (hearing sounds in words) *CVC words</i>
STAGE 7	<i>Becoming a reader and a speller</i>

Community S.K.I.L.L.S.

The key aim of Community S.K.I.L.L.S (Social Science, Key Competencies, Inquiry, Life Skills, Learning Languages, STREAM) sessions is to help children develop the values our community and school believe children need to be successful, both in their local community and the wider world surrounding it.

We want our children to be the
B.R.E.A.D of Manaia

(**B**rave **R**esilient **E**mpathetic **A**chieving **D**reamers)

These sessions provide our junior hub children with engaging, practical and where possible, real life contexts for them to explore their curiosities and extend on the formal knowledge and skills they gain during guided learning sessions.

Overall, these sessions support our children to develop into:

'confident, connected, and actively involved lifelong learners'

- NZ Curriculum



Transition to School

At Manaia School we believe that transition should be something that is done for and with a child not to a child. Research strongly highlights the importance of a successful transition process.

"The way [transition] is managed sets the stage not only for children's success at school, but also their response to future transitions" (Dockett and Perry)

The main aim of our transition process is to ensure that children are given the chance to become familiar with and feel safe and comfortable in their new learning environment before they start at our school. To support this belief we first gain voice and assess the needs of our transitioning children before they start to transition into their new environment. Our children are then supported to develop the skills and knowledge needed to successfully engage with their new learning in the Junior Learning Hub.



Transition to School

Manaia School hosts regular visits for four year olds who are ready to start their transition to school.

Our Junior School staff provide learning opportunities that align with the learning in both Te Whariki and the New Zealand Curriculum. Children are given time to explore, form friendships, build confidence and enjoy taking part in our hands on learning experiences.

The educators at both Manaia Community Preschool and Te Kohanga Reo o Manaia play an integral role in our transition process. Their support allows us to build relationships with transitioning children and their whānau.

Transition
to
school

School Visits

The number of school visits that a child requires before starting school can vary depending on their individual needs. If you have any concerns about your child settling into school more visits can be arranged.

The minimum transition that we would recommend is approximately 10 weeks before your child's 5th birthday.

During each visit, your child will participate in a wide range of activities individually and sometimes with a group of new friends in the classroom.

We encourage parents to join their child for these visits.

New Entrants First Day Checklist

If you haven't already enrolled you will need to bring your child's...

- Completed enrolment form
- Completed ECE survey form
- Birth certificate (or passport)
- Immunisation certificate (in their plunket book)

In their bag your child will need...

- Healthy food for morning tea
- Drink bottle (water only please)
- Full brimmed sun hat (Terms 1 & 4)
- A change of clothes (just in case)

Both of you should bring a big smile and a great attitude as you start this new adventure with your child



Starting School

Every child starting at Manaia School receives a **free school uniform t-shirt**. This is our way of welcoming children into our school family (whānaungatanga). We want everyone who starts at our school to feel a strong sense of belonging from their very first day. There are **no school fees or donations** to pay at Manaia School. We also provide **free stationery, lunches and when needed, breakfast, jackets and shoes**.

What class will my child be in and who will care for my child during the school day?

Your child will start school in our Junior Learning Hub. Our junior team will offer the main support and care for your child. They may also come across several other adults during their day at school – other teachers, Learning Assistants and parent helpers.

Who can my child go to if they need some help?

The building of strong relationships is an essential part of the learning process at Manaia School. If your child has a problem during the day they can go to whomever they feel safe with for help and they will work with other staff members where needed to help support your child.

What happens at lunchtime and playtime?

Supervision - Children are supervised by both a duty teacher and Senior Playground Patrollers during breaks.

Accidents/Injuries - If an accident occurs your child will be treated at school for minor injuries by a staff member trained in first aid and you will be contacted if there are any concerns.

If school Starts at 9am, what time should I drop them off?

It is a good idea to allow enough time for your child to unpack their bag, meet with friends and settle into the classroom before the bell goes. Having your child at school by 8:50am will allow for this time. This also helps to limit the disruption caused by late arrivals.

What are your expectations around behaviour?

Manaia School has used the PB4L (Positive Behaviour for Learning) framework to help create a 'Manaia Way' of being. This has helped us to create a positive school environment.

Children in the junior learning hub take part in daily morning discussions about our values, showing manākitanga (respect) and having a positive mindset. These are also revisited throughout the day to help children manage their behaviour in a positive way.





Contact Us

Phone: 06 274 8283

Email: office@manaia.school.nz

www.manaia.school.nz

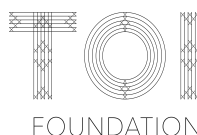
36 Karaka Street, Manaia 4612



Special thanks to the following sponsors and supporters of our school:



Manaia Community Service Committee



Manaia Volunteer Fire Brigade

